

PART OF S.E. 1/4 OF SEC. 20, T.7N., R.1W., S.L.B. & M.

70

W. S. BUTLER SUBDIVISION NO. 2

LOTS 13 TO 16 & 24 TO 27

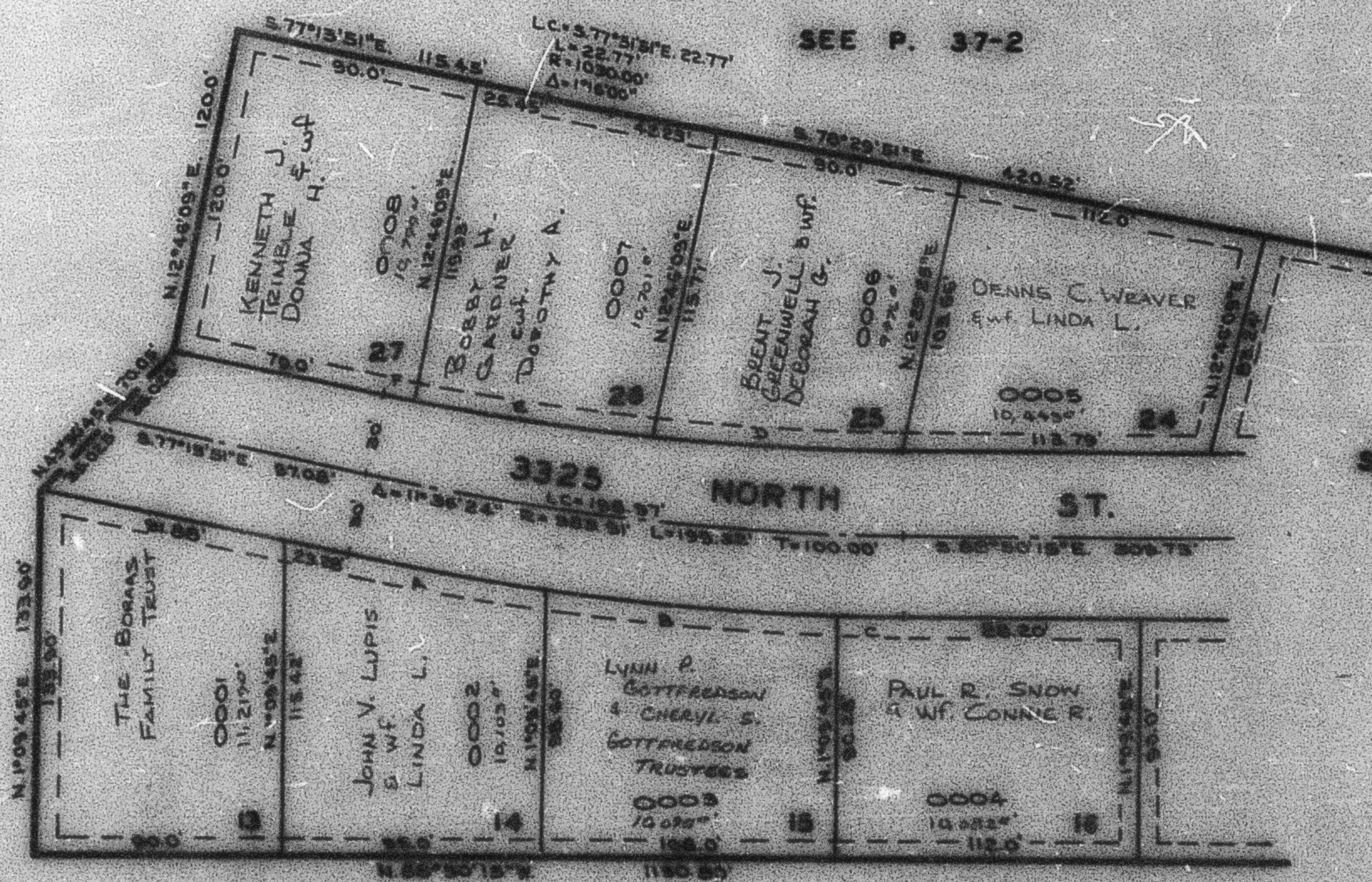
IN NORTH OGDEN CITY

TAXING UNIT: 10

SCALE 1" = 50'

PREFIX: 16-070

SEE P. 68



SEE P. 37-2

SEE P. 71

SEE BOOK 17, P. 42

SEE BOOK 17, P. 41

CURVE DATA					
A	B	C	D	E	F
Δ = 4° 08' 16"	6° 01' 27"	1° 20' 42"	5° 30' 09"	5° 36' 27"	0° 20' 56"
R = 1012.9'	1012.9'	1012.9'	522.9'	522.9'	522.9'
L = 73.22'	105.57'	23.80'	51.61'	50.62'	11.0'
LC = 73.21'	105.32'	23.80'	51.37'	50.60'	11.0'

NOTE: UTILITY & DRAINAGE EASEMENTS
EACH SIDE OF PROPERTY LINED AS
INDICATED BY DASHED LINES.
SEE ORIGINAL PLAT IN BOOK 15,
P. 75.